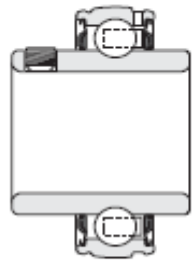
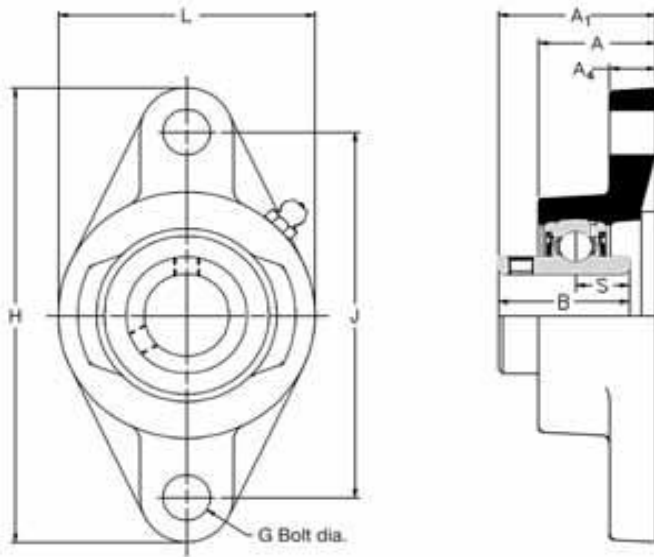
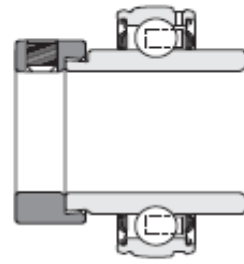


# Two Bolt Flanged Unit



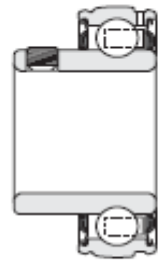
**1000G**

**Standard**



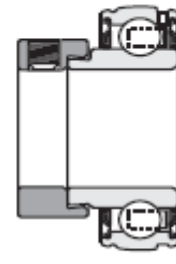
**1000DECG**

**DEC Type**



**1200G**

**A Type**



**1200ECG**

**EC Type**

See [Housed Bearing Insert](#) pages for dimensional detail

# Two Bolt Flange Units



Shaft Diameter (mm)		RHP designation	Variations			Basic Insert	Casting group	Dimensions(mm)								
Metric Range	Imperial Range		A	EC	DEC		Casting Length L	Casting Width H	Bolt Hole Centre J	Bolt Hole Size G	Flange Height A	Max Height A1	Bolt Hole Thickness A4	Inner Race Width B	Inner Race Centre S	
12		SFT12	•			1017	1	52.5	98.5	76.5	10	24.6	32.87	9.5	27.38	11.58
	12.7	SFT1/2	•			1017	1	52.5	98.5	76.5	10	24.6	32.87	9.5	27.38	11.58
15		SFT15	•			1017	1	52.5	98.5	76.5	10	24.6	32.87	9.5	27.38	11.58
	15.875	SFT5/8	•			1017	1	52.5	98.5	76.5	10	24.6	32.87	9.5	27.38	11.58
16		SFT16	•			1017	1	52.5	98.5	76.5	10	24.6	32.87	9.5	27.38	11.58
17		SFT17	•			1017	1	52.5	98.5	76.5	10	24.6	32.87	9.5	27.38	11.58
	19.05	SFT3/4	•	•	•	1020	2	60.3	111.9	90	10	27.8	37.26	11.1	31	12.73
20		SFT20	•	•	•	1020	2	60.3	111.9	90	10	27.8	37.26	11.1	31	12.73
	22.225	SFT7/8	•	•	•	1025	3	70	125.5	99	10	28.6	38.84	11.1	34.1	14.33
	23.812	SFT15/16	•	•	•	1025	3	70	125.5	99	10	28.6	38.84	11.1	34.1	14.33
25		SFT25	•	•	•	1025	3	70	125.5	99	10	28.6	38.84	11.1	34.1	14.33
25		MSFT25				1030	1	82.6	141.3	116.5	10	29.8	42.21	12.7	38.1	15.93
	25.4	SFT1	•	•	•	1025	3	70	125.5	99	10	28.6	38.84	11.1	34.1	14.33
	25.4	MSFT1				1030	1	82.6	141.3	116.5	10	29.8	42.21	12.7	38.1	15.93
	28.575	SFT1-1/8	•	•	•	1030	4	82.6	141.3	116.5	10	29.8	42.21	12.7	38.1	15.93
30		SFT30	•	•	•	1030	4	82.6	141.3	116.5	10	29.8	42.21	12.7	38.1	15.93
30		MSFT30				1035	2	95.5	155.5	130	12	31.4	46.41	12.7	42.9	17.53
	30.16	SFT1-3/16	•	•	•	1030	4	82.6	141.3	116.5	10	29.8	42.21	12.7	38.1	15.93
	30.16	MSFT1-3/16				1035	2	95.5	155.5	130	12	31.4	46.41	12.7	42.9	17.53
	31.75	SFT1-1/4R	•	•	•	1030	4	82.6	141.3	116.5	10	29.8	42.21	12.7	38.1	15.93
	31.75	SFT1-1/4	•	•	•	1035	5	95.5	155.5	130	12	31.4	46.41	12.7	42.9	17.53
	31.75	MSFT1-1/4				1035	2	95.5	155.5	130	12	31.4	46.41	12.7	42.9	17.53
	34.925	SFT1-3/8	•	•	•	1035	5	95.5	155.5	130	12	31.4	46.41	12.7	42.9	17.53
	34.925	MSFT1-3/8				1040	3	101.6	171.4	143.5	12	34.9	54.18	12.7	49.2	19.03
35		SFT35	•	•	•	1035	5	95.5	155.5	130	12	31.4	46.41	12.7	42.9	17.53
35		MSFT35				1040	3	101.6	171.4	143.5	12	34.9	54.18	12.7	49.2	19.03
	36.512	SFT1-7/16	•	•	•	1035	5	95.5	155.5	130	12	31.4	46.41	12.7	42.9	17.53
	36.512	MSFT1-7/16				1040	3	101.6	171.4	143.5	12	34.9	54.18	12.7	49.2	19.03
	38.1	SFT1-1/2	•	•	•	1040	6	104.5	171.4	143.5	12	34.9	54.18	12.7	49.2	19.03
	38.1	MSFT1-1/2				1045	4	111.1	179.4	148.5	16	35.3	54.18	14.3	49.2	19.04
40		SFT40	•	•	•	1040	6	104.5	171.4	143.5	12	34.9	54.18	12.7	49.2	19.03
40		MSFT40				1045	4	111.1	179.4	148.5	16	35.3	54.18	14.3	49.2	19.04
	41.275	SFT1-5/8	•	•	•	1045	7	111.1	179.4	148.5	16	35.3	54.18	14.3	49.2	19.04

# Two Bolt Flange Units



Shaft Diameter (mm)		RHP designation	Variations			Basic Insert	Casting group	Dimensions(mm)								
Metric Range	Imperial Range		A	EC	DEC		Casting Length L	Casting Width H	Bolt Hole Centre J	Bolt Hole Size G	Flange Height A	Max Height A1	Bolt Hole Thickness A4	Inner Race Width B	Inner Race Centre S	
42.862		SFT1-11/16	•	•		1045	7	111.1	179.4	148.5	16	35.3	54.18	14.3	49.2	19.04
		MSFT1-11/16				1050	5	115.9	188.9	157	16	39.7	60.53	14.3	51.6	19.04
44.45		SFT1-3/4	•	•	•	1045	7	111.1	179.4	148.5	16	35.3	54.18	14.3	49.2	19.04
		MSFT1-3/4				1050	5	115.9	188.9	157	16	39.7	60.53	14.3	51.6	19.04
45		SFT45	•	•	•	1045	7	111.1	179.4	148.5	16	35.3	54.18	14.3	49.2	19.04
		MSFT45				1050	5	115.9	188.9	157	16	39.7	60.53	14.3	51.6	19.04
47.625		SFT1-7/8		•	•	1050	8	115.9	188.9	157	16	39.7	60.53	14.3	51.6	19.04
		MSFT1-7/8				1055	6	127	215.9	184	16	43.7	64.31	17.5	55.6	22.24
49.212		SFT1-15/16		•	•	1050	8	115.9	188.9	157	16	39.7	60.53	14.3	51.6	19.04
		MSFT1-15/16				1055	6	127	215.9	184	16	43.7	64.31	17.5	55.6	22.24
50		SFT50	•	•	•	1050	8	115.9	188.9	157	16	39.7	60.53	14.3	51.6	19.04
		MSFT50				1055	6	127	215.9	184	16	43.7	64.31	17.5	55.6	22.24
50.8		SFT2R				1050	8	115.9	188.9	157	16	39.7	60.53	14.3	51.6	19.04
		SFT2			•	1055	9	127	215.9	184	16	43.7	64.31	17.5	55.6	22.24
50.8		MSFT2				1055	6	127	215.9	184	16	43.7	64.31	17.5	55.6	22.24
	53.975	SFT2-1/8			•	1055	9	127	215.9	184	16	43.7	64.31	17.5	55.6	22.24
55		SFT55			•	1055	9	127	215.9	184	16	43.7	64.31	17.5	55.6	22.24
		MSFT55				1060	7	138.1	235	202	16	47.6	73.69	17.5	65.1	25.44
55.562		SFT2-3/16			•	1055	9	127	215.9	184	16	43.7	64.31	17.5	55.6	22.24
		MSFT2-3/16				1060	7	138.1	235	202	16	47.6	73.69	17.5	65.1	25.44
57.15		SFT2-1/4			•	1060	10	138.1	235	202	16	47.6	73.69	17.5	65.1	25.44
	60	SFT60			•	1060	10	138.1	235	202	16	47.6	73.69	17.5	65.1	25.44
60.325		SFT2-3/8			•	1060	10	138.1	235	202	16	47.6	73.69	17.5	65.1	25.44
	61.912	SFT2-7/16			•	1060	10	138.1	235	202	16	47.6	73.69	17.5	65.1	25.44